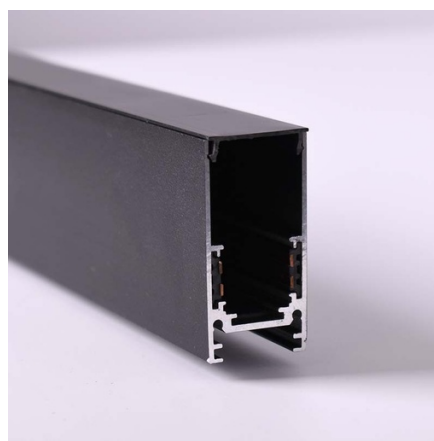




## Carril magnético 20mm 2627 de superficie y suspensión 48V - 2 metros

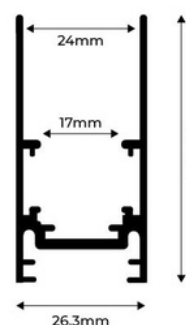
20 mm surface magnetic rail made of high-quality aluminum, available in white and black. Allows the easy placement of LED magnetic spots according to the needs of each project. It offers numerous configuration options and can be installed on both ceilings and drywall walls, posing no risk to users as it operates at a low voltage (48V). It allows for surface mounting and also for suspension, by adding the suspension kit. \*\*Includes a plastic cover to cover the free surface between fixtures and two end caps\*\*



### Product data

Case color	White (use), Black (use)
------------	--------------------------

↗ 1M



Product variants

Reference	Attributes	
CM-2627-2M-B	Case color : White (use)	
CM-2627-2M-N	Case color : Black (use)	