

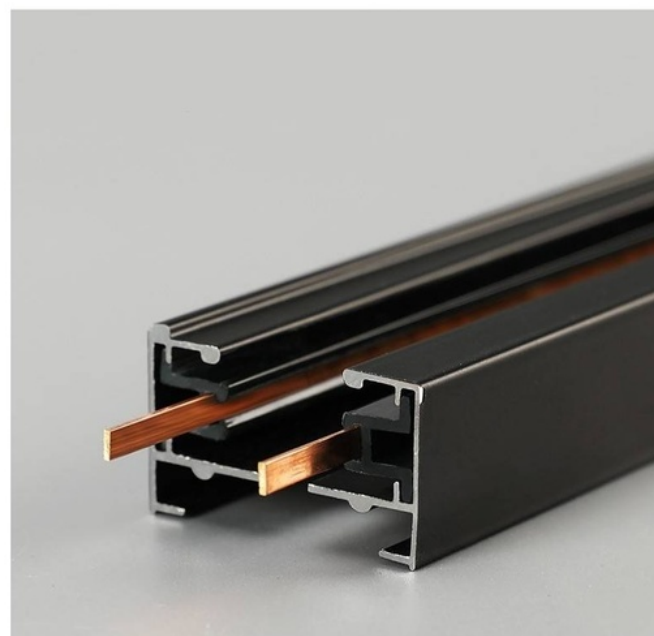
Surface mounted 1-phase track for LED spotlights - 1 m

100cm single-phase electrified surface-mounted rail made of extruded aluminum (34x21mm) **Includes feeder and end cap** Single-phase 220 - 240 V 1000x34x21 IP20



Product data

Case color	White (use), Black (use)
Certs	CE, ROHS
Dimensions (mm) LxWxH	1000x34x21
Guarantee	According to legal warranty: 3 years
Maximum intensity (A)	2.1
IP	IP20
Assembly	Surface, Suspension
Nominal Voltage (V)	220 - 240 V AC
Track Type	Single-phase
Outdoor Use	No



Product variants

Reference	Attributes	
BTM-100-B	Case color : White (use)	
BTM-100-N	Case color : Black (use)	