



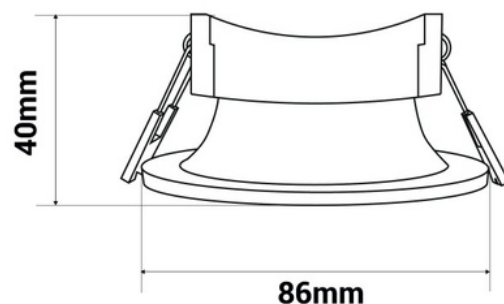
Circular downlight ring for GU10 / MR16 bulb - Cut Ø70mm

Aro downlight made of polycarbonate specially designed to house GU10/MR16 LED bulbs. It has an elegant and simple appearance and is available in five colors: black, white, silver, champagne, and gold. Its recessed conical design helps to prevent any type of glare. This versatile recessed ring can be used in both residential and commercial settings, whether in new construction or to replace existing bulbs. ** Bulb not included**



Product data

| | |
|-----------------|---|
| Case color | White (use), Black (use), Silver (to use), Gold (to use), Champagne (use) |
| Certs | CE, ROHS |
| Guarantee | According to legal warranty: 3 years |
| IP | IP20 |
| Material | Polycarbonate |
| Assembly | Recessed |
| Orientable | No |
| Outdoor Use | No |
| Recommended Use | Dining room, Bedrooms, Kitchens, Living room |



Product variants

Reference

Attributes

B980-R-B

Case color : White (use)



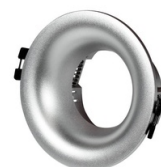
B980-R-C

Case color : Champagne (use)



B980-R-D

Case color : Gold (to use)



B980-R-N

Case color : Black (use)



B980-R-P

Case color : Silver (to use)

