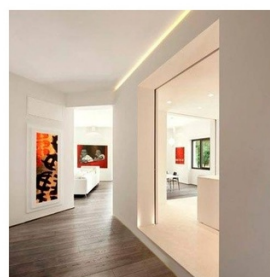


## Plaster/Pladur 46x26 Inside Corner Integration Profile (2m)

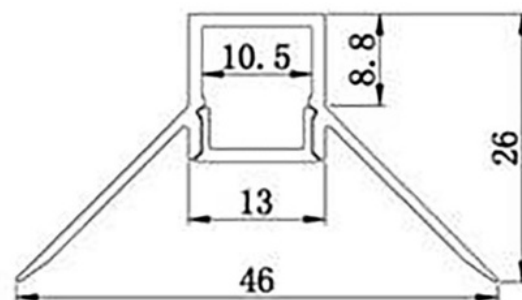
### Ref. BPERFALP069

The aluminum profile for integration of 46x26mm and 2 meters long. It is installed on the ceiling or plasterboard wall. It allows for linear lighting and is perfect for interior corner and nook lighting. Includes opal diffuser. Offers an innovative lighting solution with LED strips that have a maximum width of 10mm. It can be painted any color. It creates infinite architectural and interior lighting solutions. It is commonly used for corner and wall lighting, and recessed linear lighting. 46x26mm Length: 2m Material: Aluminum It can be painted in any color For flexible or rigid LED strips of <10mm Compatible with caps ref. BTPEC068R



### Product data

Certs	CE, ROHS
Dimensions (mm) LxWxH	2000x46x26
Guarantee	According to legal warranty: 3 years
IP	IP20
Material	Aluminum
Assembly	Integration
Outdoor Use	No
Recommended Use	Corners



Product variants

Reference

Attributes

BPERFALP069

